

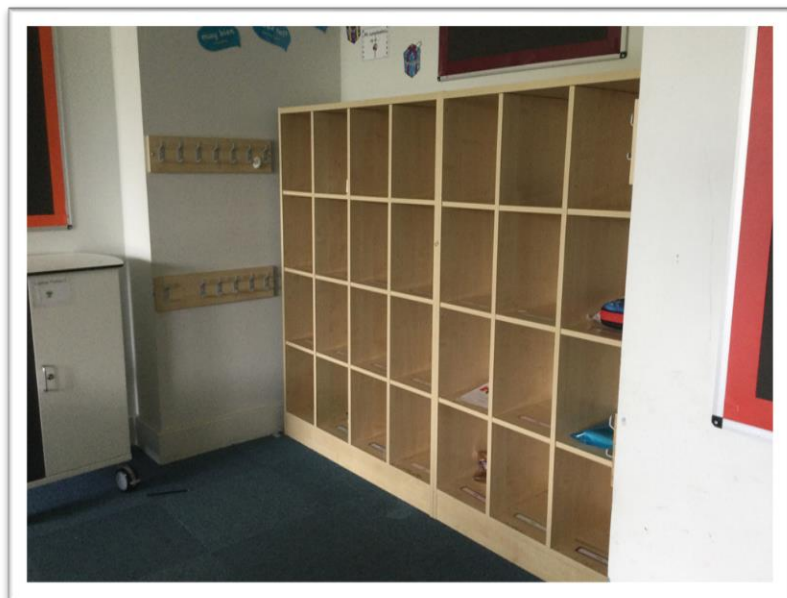
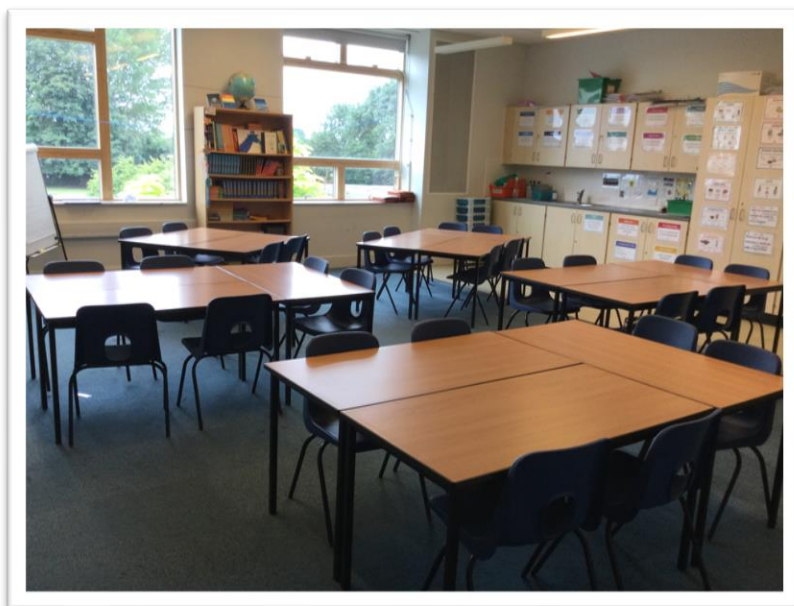


# *Welcome to 6 Beech*

**Your class teacher is Miss Sharpe**

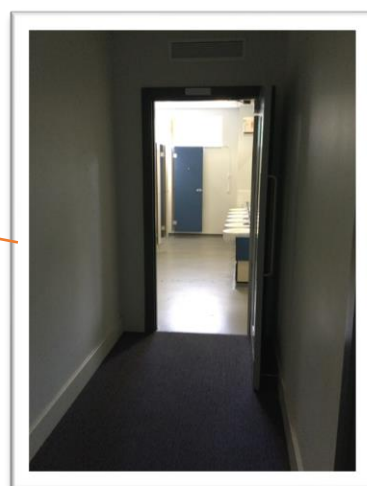
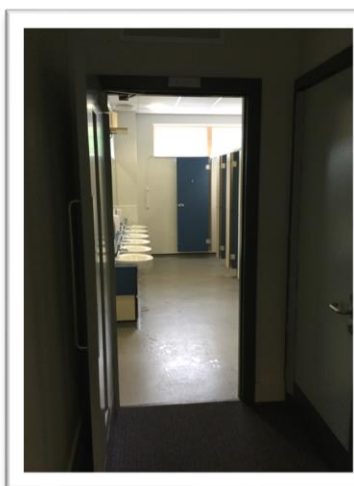


## **My Year 6 classroom**



**Everyone has a cubby  
hole or pegs in the  
classroom.**

**The toilets are situated in the Year 6 Corridor.**



**The library is also situated in the Year 6 corridor.**



**Entering and Leaving School**



Arrive at school at 8:45am.

Enter and exit the building at the courtyard end of the building.

School finishes for Year 6 at 3:20pm

## **The Playground and Field**



## **Break and Lunch**

Year 5 and 6 share the playground at breaktime.

At the end of break, the teacher on duty blows a whistle. Remember to stop, listen and then line up quietly.

Lunchtime begins at 12:20pm; outside first then lunch will be in the hall when your class is called. Some of the playground time will be shared with Year 3 and 4.

When Lunchtime is finished line up and wait for the class teacher.

## Year 6 Topics Next Year

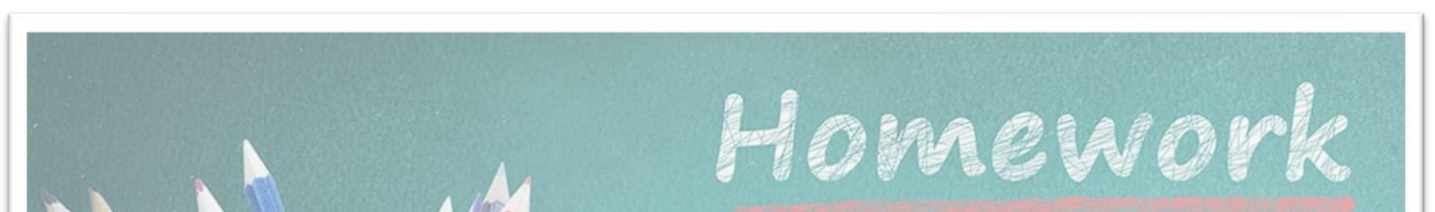
Autumn Term: The Ancient Maya



Spring Term: The Great Outdoors



Summer Term: Crime and Punishment



Over the summer we would like you to do some research on **The Ancient Maya**. This can be about anything you like, presented in any way you like (a poster, a digital presentation, a model or a piece of art). Make sure you bring it with you on the first day back in September!