



# *Welcome to '5 Maple'*

**Your class teachers are:**



**Mrs Lane-Petter**



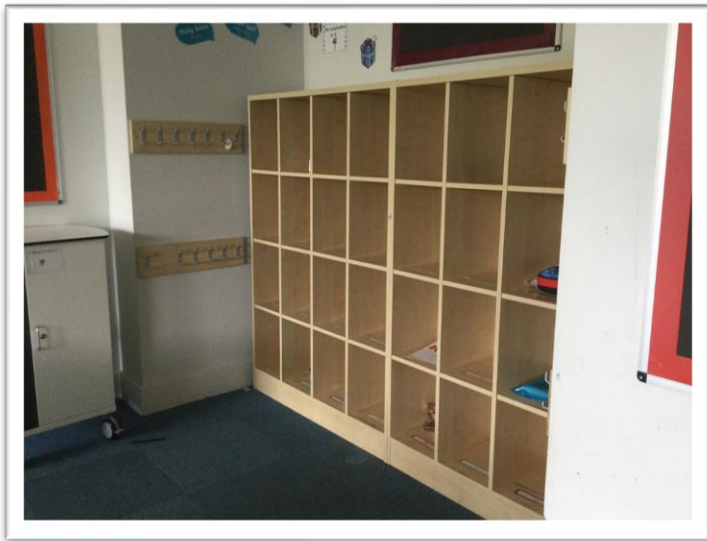
**Mr Rayner**

**Teaching Assistants in your class:**



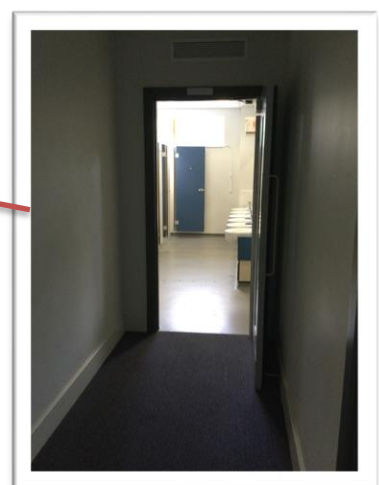
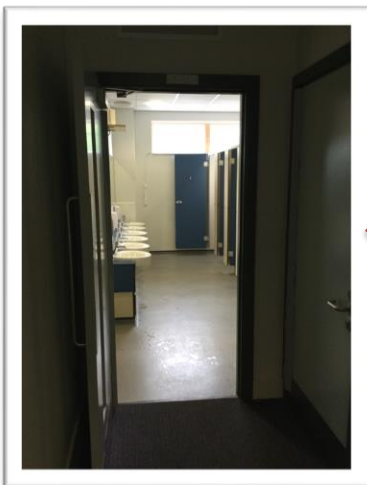
**Mrs Powlson**

## **A Year 5 classroom**



**Everyone has a cubby hole or  
pegs in the classroom.**

**The toilets are situated in the Year 5 Corridor.**



**The library is situated  
in the Year 5 corridor.**



## **Entering and Leaving School**

Arrive at school at 8:45am.

Enter and exit the building on the  
courtyard end of the building.

School finished for Year 5 at 3:20pm



## **The Playground and Field**



### **Break and Lunch**

Year 5 and 6 share the playground at breaktime.

At the end of break, the teacher on duty blows a whistle. Remember to stop, listen and then line up quietly.

Lunchtime begins at 12:20pm; outside first then lunch will be in the hall when your class is called. Some of the playground time will be shared with Year 3 and 4.

When Lunchtime is finished line up and wait for the class teacher.



## Year 5 Topics Next Year

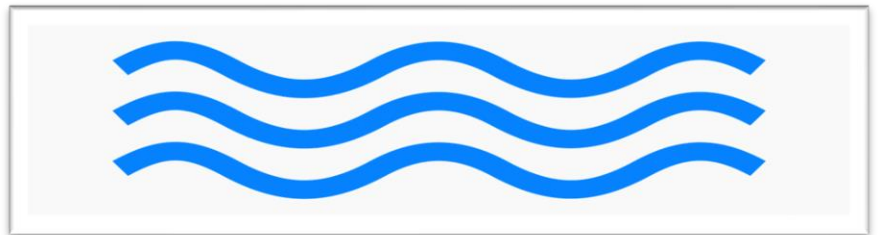
Autumn Term: World War Two



Spring Term: The Ancient Egyptians



Summer Term: Rivers and Oceans



## Homework

Over the summer we would like you to do some research on **World War Two**. This can be about anything you like, presented in any way you like (a poster, a digital presentation, a model or a piece of art). Make sure you bring it with you in September!

